

California University of Pennsylvania



<http://www.cup.edu/index.jsp>

The mission of California University of Pennsylvania is to build the character and careers of our students. And while building careers seems normal for universities, building character may seem less so. But the rationale for building character as well as careers is best seen in these words by Theodore Roosevelt: “To educate a person in mind but not in morals is to educate a menace to society. Since 1852, eager students have seized the opportunity to develop their character and careers here and, in so doing, have improved their lives and the lives of those around them. To advance its ultimate mission of building the character and careers of students, the University relies upon committed faculty, motivated students, challenging programs, and exceptional facilities. Since learning at California University is not restricted to one’s academic major, the university experience here is a broad one, involving many co-curricular and extra-curricular opportunities. Students can select from a number of academic minors and concentrations, and can choose from an array of student activities, ranging from athletics to honor societies, and from Greek organizations to service learning and scores of student clubs and organizations.

Cal U is a student-centered university that is committed above all to academic excellence and intellectual rigor in the context of personal and institutional integrity, civility, and responsibility. We provide a welcoming, family atmosphere. Cal U is large enough to offer a variety of programs, yet small enough to know many students by name. The university is in the Borough of California, a community of approximately 6,000 residents, located on the banks of the Monongahela River, about an hour’s drive south of Pittsburgh. It is accessible via Interstate 70, Exits 15 (PA 43), 16 (Speers), or 17 (PA 88, Charleroi) or via U.S. 40 (PA 43 or 88). The Mid-Mon Valley/ Fayette Expressway (PA 43) links California to the federal Interstate Highway system. The university is approximately 30 minutes from Exit 8 (New Stanton) on the Pennsylvania



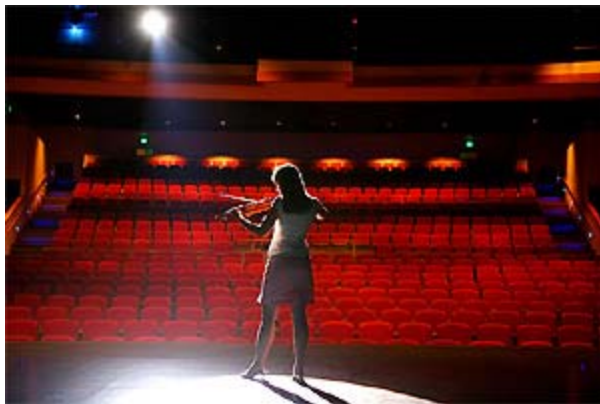
Turnpike, and an hour from Greater Pittsburgh International Airport. The main campus consists of 38 buildings situated on 90 acres. An additional 98-acre recreation complex, George H. Roadman University Park, is located one mile from campus. This complex includes a football stadium, an all-weather track, tennis courts, a baseball diamond, a softball diamond, soccer and rugby fields, a cross country course, areas for intramural sports, and picnic facilities. Satellite facilities are located at Southpointe in Canonsburg, PA and in the Regional Enterprise Tower in Pittsburgh, PA.

The geographic location of the university gives the resident student opportunities to explore and pursue a wide variety of activities. Located on the Appalachian Plateau, an area of rolling hills, the university is a short drive from camping, hiking, fishing, hunting, white water rafting, and canoeing, and skiing activities



in the Laurel Mountains. In addition to cultural activities provided on campus, the student has easy access to the Pittsburgh metropolitan area, located only 30 miles from campus. This provides an opportunity to enjoy the Pittsburgh Symphony, the Pittsburgh Ballet, the Civic Light Opera, the David L. Lawrence Convention Center, the Pittsburgh Steelers, Penguins, and Pirates, various museums and all of the excitement and attractions of a metropolitan area. The institution that is now California University of Pennsylvania began as an academy more than 150 years ago. It has evolved over the years until now it is a multi-purpose

university. One of the fourteen state-owned institutions of higher education in the Pennsylvania State System of Higher Education, it has the strength and stability of a university system, but it retains its own flavor and unique history.



Admissions Office
California University of Pennsylvania
250 University Avenue
California, PA15419-1394
Phone: 724-938-4404
Toll Free: 1-888-412-0479
FAX: 724-938-4564

<http://www.cup.edu/prospective/index.jsp?pageId=1580830010421122045539486>

About Scholarships

California University of Pennsylvania offers academically talented and creatively gifted students a variety of University and Endowed Scholarship opportunities. Each scholarship has special selection and awarding criteria, which was agreed upon by the University and the scholarship donor (if applicable). In order to streamline the selection process, California University does not use a scholarship application. Rather, all accepted students and currently enrolled students are considered for all possible University scholarships. However, selected applicants for some of the scholarship awards may be required to complete additional information for final determination of the award.

The scholarships offered range from \$100 to full-tuition for an academic year. Many of the scholarships are renewable awards based on the student maintaining minimum academic standards and demonstrating financial need, if applicable. The Financial Aid Office or designated selection committee will select the best applicant(s) from the "pool" of students who met the minimum qualifications for the scholarship.

http://www.cup.edu/financial_aid/index.jsp?pageId=1580830010421132491409431

<http://www.cup.edu/financial%5Faid/index.jsp>